

## ABSTRACT

The effects of electromagnetic fields (EMFs) with a maximum 138 gauss and 100 Hz frequency was applied on the development of Balb/c mouse strain embryos in this work. Pregnant mice aged 2.5 - 3 months old after vaginal plug observation were exposed to EMFs once for 10 hours in days 5, 6 and 7 of gestation separately.

Simultaneously groups of sham - exposed and controls were used in each experiment.

In all experiments the embryos were extruded in day 15 of gestation, studied morphologically and histologically. The experimental embryos of day 5 gestation showed a significant increase in CR measurements ,body and placenta weights ( $p < 0.05$ ) and abnormal development of vertebral column.

In %17.1 of the cases the embryos with their placentas were atrophied, also %30.4 of placentas in maternal surface contained increased numbers of Hofbauer macrophage cells.

The experimental embryos of day 6th gestation showed significant increase in CR measurements ( $p < 0.05$ ).

The embryos revealed morphological features of day 17 and 18 of gestation when extruded in day 15. These experimental embryos had a thick and wrinkled skin, the eye lids and pinnae were formed completely, these changes were due to their accelerated growth and development.

The gestation period decreased in this series of experiments and in some cases the litters were born in day 17 - 18 (normal days 19 - 20) of pregnancy.

The experimental embryos of day 7 of gestation showed %9.4 abnormal curvature in head - tail axis and neural tube.

CR measurement and their body weights had significant increase ( $p < 0.05$ ) in these series of experiments.

### Abbreviations:

EMFs : Electromagnetic fields

CS : Cross section

Sg : Sagittal section

Ft : Frontal section

CR : Crown rump measurements

## Introduction

In recent years the effects of EMFs on biological material have attracted many workers. Goodman, et. al (1979) studied the effects of 0.1-2 gauss intensity on *Physarum polycephalum* and found changes in respirations and cell divisions. Edelman et. al (1974) reported the effect of magnetic fields on frog sciatic nerve. Basset (1981, 1982) gained some success in bone fracture repair using pulsing EMFs. Lubin, et. al (1982) studied EMFs stimulations on bone and bone cell in vitro.

There are various contradictory results from the effects of EMFs on development of different embryos. Studies made by Delgado, et. al (1982) using 10,000 and 1000 Hz EMFs and Juutilainen et.al (1986 a,b) on chick embryos resulted considerable defects and Maffeo (1984, 1988) using 120 m gauss EMFs did not find significant embryonic malformation in chick. Studies of Nishikava (1987) using 5-19 gauss EMFs during prenatal and postnatal developmental stages also did not show remarkable, malformations in mice.

In 1988 Heinrichs by application of 0.35 Tesla (1 Tesla =  $10^4$  gauss) EMFs in day 9 of gestation for 16 hrs reported CR decrease in 18 days Balb/C mouse embryos. Mcgivern (1990) worked out the effect of 8 gauss EMFs on rat embryos and reported weight increase of sex organs and in his studies effects of EMFs on the litters did not change the levels of testosterone, FSH and LH till day 120. Zusman (1990) used 20 and 50 Hz EMFs in mouse and rat embryos reported %50 undeveloped blastocysts, telencephalon and optic vesicle, also

decrease in CR measurements. Tyndall (1988) using a therapeutic magnetic resonance imaging (MRI) dose of 1.5 Tesla in day 7 of gestation found eye maldevelopment in C57 Bl/6J mouse embryos. Also there are reports\*indicating that EMFs produced from high voltage power lines increases leukemia in resident human individuals around them (Wertheimer and Leeper 1979, Wertheimer, 1983).

## Material and Methods

Balb/C mice strain obtained from the Institute of Pasteur, Tehran were used as a model in this investigation.

The EMFs coil was constructed in the departmental workshop. The coil consisted of a plastic cylinder 24.7 cm length, 13.04 cm diameter and around it 6 layers enamelled copper wire 0.95 mm in diameter with 250 turns in each layer were applied. To uniform the EMFs between each layer of the coil a sheet of solenoid was used. The magnetic field strength at the center of the coil was calculated from the following formula:

$$B_m(\text{gauss}) = \mu_0 G I m \sqrt{\frac{Rf}{\rho_0}}$$

Where:

$B_m$  = maximum magnetic field

$\mu_0$  = permeability of vacuum = 1 uemcgs

G = constant which depends on geometrical property of coil and current distribution.

$I_m$  = maximum current = 2.13 A

R = resistance of coil ( $\Omega$ )

$$f = \frac{\text{volume of the wiring}}{\text{total volume of the coil}} = \frac{V_c}{V_t}$$

$\rho$  = Resistivity of copper =  $1.8 \cdot 10^{-6} \Omega\text{cm}$

$r_0$  = inner radius of the coil (cm)

G is calculated from:

$$G = 0.2 \sqrt{\frac{2\pi\lambda}{\alpha^2-1}} \times \ln \left[ \frac{\alpha + \sqrt{\lambda^2 + \alpha^2}}{1 + \sqrt{\lambda^2 + 1}} \right]$$

Where :

$$\lambda = \frac{l}{2r_0}, \alpha = \frac{r}{r_0}$$

l = length of coil (cm)

r = outer radius of coil (cm)

$V_c = LA$

L = total length of wire = 592 m

A = cross section of wire =  $7.08 \cdot 10^{-3} \text{ cm}^2$

$$V_t = \pi l (r^2 - r_0^2)$$

**Specifications of coil:**

$r_0 = 6.25 \text{ cm}$

$r = 7 \text{ cm}$

$l = 24.7 \text{ cm}$

$R = 15 \Omega$

The function generator used in this work was full wave rectifier. Using such and equipment and

design of EMFs we could obtain a field with maximum 138 gauss and 100 Hz (Fig 1). In each experiment in a small plastic cage. (8 cm length, 3 cm width and 4 cm high) in days of 5, 6 and 7 of gestation were placed in the center of EMFs for 10 hours. In each series of experiment sham, exposed and controls were used. In day 15 of gestation the pregnant mothers were killed and their embryos extruded. The embryos were washed with saline solution, weight and CR measurements was applied separately. After morphological observations the embryos were fixed in Bouin's fluid for histological investigations. Serial cs, ft and sg sections ( $6 \mu\text{m}$  thickness) were prepared and the slides stained with H & E. The whole mount embryos photographed with Zeiss stereophotomicroscope model DR and the sections with Zeiss photomicroscope model M<sub>2</sub>.

Analysis of variance was applied as statistical method.

In another series of experiments 5 pregnant mothers were exposed to EMF and allowed to approach the term. These experiments were set up to compare normal and experimental delivery time.

## Results

The effects of EMF with 138 Gauss intensity in a frequency of 100 Hz on the development of Balb/C mouse embryos investigated. Observations on the 5 days old embryos showed increase in CR, weight and placentas measurements (fig 2). %8 of the embryos of this day of gestation had lordosis defect (Figs 3,4). In %10 of the experimental

embryos abnormal curvature in the vertebral column were observed (Fig 5), and %20 of the embryos were atrophied. The embryos were atrophied in different stages of development (Fig 6). The placentas of experimental embryos showed different degrees of malformation, they were larger than sham-exposed and controls (Fig 7). In some cases they had atrophied pieces remained tightly in maternal surface (Fig 8).

Serial sections of experimental placentas showed atrophied pieces in maternal surface, tissue disorganization irregular decidual septa and increase of macrophage cells in atrophied areas (Figs 9, 10)

Experimental embryos of days 6 of gestation showed the most malformation in this work, CR measurements showed extreme increase and the weights of embryos and placentas increased considerably (Fig 11).

Despite of accelerated growth the development in 6 days embryos their eyelids were closed but the lens and retina had normal development (Figs 12, 13). The external ears showed considerable defect, the pinnae were collapsed and meatus had no external ostium (Fig 14, 15). These characteristics are similar to the embryos of day 17-19. The embryos of these series of experiments were traced up to day of birth. The results showed decrease in the length of pregnancy.

Weight measurement of the litters showed significant increase (Fig 16). The embryos of 7 days gestation revealed modifications in body curvature towards the left side in vertebral column,

(Fig 17,18). Histological observation embryos showed defects intervertebral discs of the discs did not develop in normal form their height were shorter than the control condition. The weight of placentas comparing with the control individuals series of embryos (Fig 19).

## Discussion

Although Conghill (1990) and some other researchers introduced EMFs as killing agents, it seems there remains many works to be done in this line of research. It is obvious that different intensities produce various alterations at the molecular and cellular levels of organisms (Pool, 1990). The induction of DNA replication and RNA transcription has been worked out by Goodman et al (1983) on bacteria under EMFs influence. EMFs have effects on the cell surface (Marron et al 19983) on junctional complexes (Lubin, 1982) and on intracellular  $Ca^{++}$  concentration (Jolly, 1983). Liboff (1983) reported effects of 2.3-560  $\mu T$  increase in protein synthesis. Studies on different literature reveal that EMFs are not mutagenic agents but there are strong reasons for teratogenicity of EMFs.

Experiments carried out by Delgado and Ubada (1983), Cameron (1985), Rooze and Juutilainen (1986) and others on the effects of EMFs on embryos under the EMFs in different frequencies each revealed specific results. Application of EMFs with 100 Hz and 1.2  $\mu T$  intensity Delgado has shown suppressive effects on

embryo development this result has already been agreed with other investigators. Experiments of Zusman (1990) using low EMFs on the mammalian embryos did not show significant results in vivo conditions. We also did not get significant results in the same fields. The effects of high EMFs with 138 gauss resulted remarkable defects in particular in day 6 of gestation. It is concluded that by using low field the mother's protective systems both in molecular and organ levels maintain the embryonic development in normal conditions but in the high fields these systems are not efficient.

Experimental embryos in our work in day 5 of gestation showed a significant increase in CR measurements, body and placenta weights ( $p < 0.05$ ) (Fig.5) and various results including lordosis, maldevelopment of vertebral column; since on this day of development the egg cylinder is formed. According to Delgado (1982) it can be postulated that, changes in orientation of glycosaminoglycans could affect the embryonic tissue development resulting various defects and atrophied embryos. Also it is resulted that day 5 of gestation is a very high critical period to the mouse embryos in high intensity EMFs. In comparison, the embryos of day 6 of gestation showed completely different results; growth and development was remarkable and no atrophied embryos were observed. The experimental embryos in day 15 of gestation are comparable with day 18-19 of normal development from CR and weight measurements points of view. The skin of day 6 embryos under EMFs effects are similar to the term embryos, with a very thick,

wrinkled and though appearance. Results of day 7 of gestation is contradictory with day 6. In these embryos no significant defect except a curved appearance in vertebral column were observed and this may be is due to the presomite stage defects of day 7. comparing all of the statistical results of this work on the CR measurements, body and placenta weights, a significant increase is observed on these parameters, Figures: 2, 11, 16 and 19 ( $p < 0.05$ ). It is concluded that high intensity EMFs can be considered as mitogenic, teratogenic and mutagenic agent.

### Acknowledgments

The authors express their deep gratitude to the Research council of the University of Teacher Education of Tehran for supplying research budget of this work and to DR.R.A. Khavari - Nejad for his generous helps in statistical analysis.

### REFERENCES

1. Bassett, C.A.L., Mitchell, S. N. and Gaston, S.R (1981) Treatment of ununited tibial diaphyseal fractures with pulsing electromagnetic fields. *The Bone, Joint Surg.* 63-A, No.4 : 511-521
2. Bassett, C.A.L., Valdes, M.G. and Hernandez, E. (1982) Modification of fractured repair with selected pulsing electromagnetic fields. *The J. Bone, Joint Surg.* 64-A, No. 6: 888-894
3. Cameron, Il. (1985) Retardation of embryogenesis by extremely low frequency 60-Hz

electromagnetic field. *Physiol. chem. phys. Med. NMR.* 17, No.1 : 135 - 118

4. Cognill, R. (1990) Killing fields, the biophysycal evidence. *Electronic World + Wireless world.* Fef. : 112 -118

5. Delgado, J.M.R., Leal, J., Monteagudo, J.L. and Garcia, M.G. (1982) Embryological changes induced by weak extgremly lwo frequency electromagnetic fields. *J. Anat.* 134, No.3 : 533-551.

6. Edelman, A., Teulon, J. and Puchlaska, I. B (1974) Influence of magnetic field on frog sciatic nerve. *Biochem. Biophys. Res. Commun.*, 91 : 118.

7. Goodman, E. M., Greenebaum. B. and Marron, M.T. (1970) Bioeffects of extremely low frequency electromagnetic fields (variation with intency, wave form and individaul or combined electric and magneic fields). *Radiat. Res.* 78 : 485-501.

8. Goodman, R., Bassett, C. A. L. and Henderson, A.S. (1983) Pulsing electromagnetic fields induce cellular transcription. *Science*, 220: 1283-1285.

9. Heinrichs, W. L., Fong, P., Flannery, M., Heinrichs, S.C. , Grooks, L.E., Spidle, A. and Pederson, R. A. (1988) Midgestation exposure of pregnant Balb/c mice to magnetic resonance

imaging conditions. *magnet. Res. Imagin* 305-314.

10. Jolley, W.B, Hinshaw, D.B. and Knele (1983) Magnetic field effects on calcium eff insulin secretion in isolated rabbit isla Langerhans. *Bioelectromag.* 4: 103.

11. Juutilainen, J. Harri, M., Saali, Lahtinen, T. (1986 a) Development of embryos in 1-Hz magnetic fields. *Radi. E Biophys.* 25: 125-140.

12. Juutilainen, J. Harri, M., Saali, Lahtinen, T. (1986 b) Effects of 100-Hz m fields with various wave forms on the devel of chick embryos. *Radi. Environ. Bioph* 65-74.

13. Liboff, A.R. (1984) Time varying n feilds : effect on DNA synthesis. *Science*, 22

14. Luben, R. A., Cain, Ch. D., Chen, M Rosen, D.M. and Adey, W.R. (1982) Ef electromagnetic stimuli on bone and bone vitro: Inhibition of responses to par hormone by low energy low frequency. *Proc. Nat. A cad. Sci. U.S.A.* 79: 4180-418

15. Maffeo, S., Miller, M. and Garstense (1984) Lack of effect of Weak low fr electromagnetic field on chick embryoge *Anat.* 139: No.4, 613-618.

16. Maffeo, S., Brayman, A.A., Miller, M. W., Carstensen, E.L., Giaravino, V. and Cox, C. (1988) Weak low frequency electromagnetic fields and chick embryogenesis. Failure to reproduce positive findings. *J. Anat.*, 157 : 101-104.
17. Marron, M.T., Greenebaum, B., Swanson, J.E. and Goodman, E. M. (1983) Cell surface effect of 60- Hz electromagnetic fields. *Radi. Res.* 94: 217 -220.
18. McGivern, R.F. (1990) Prenatal exposure to a low frequency electromagnetic field demasculinized adult sex marking behavior and increases accessory sex organs weight in rat. *Teratology*, 41 : 1-8
19. Nishikawa, v. (1987) Biological effects of pulsing electro magnetic field on ICR mice. *J. Jpn. Ortop. Assos.* 61: 1413 - 1428.
20. Pool, R. (1990) Electromagnetic fields: The biological evidence. *Science.* 249: 1378-1381.
21. Rooze, M. and Hisenkamp, M. (1985) In vivo modification induced by electromagnetic stimulation of chick embryos. *Reconstr. Surg. Traumat.* 19: 87-92 (Karager, Basel)
22. Tyndall, D.A. (1991) Effects of magnetic resonance imaging on eye development in the C57BL/6J mouse. *Treatolog*, Vol : 43, 263- 275.
23. Ubeda, A., Leal, J., Trillo, M.A., Jimenez, M.A. and Delgado, J.M.R. (1993) Pulse shape of magnetic fields influences chick embryogenesis. *J. Anat.* 137: No.3, 513-536.
24. Wertheimer, N. and Leeper, E. (1979) Electrical wiring configurations and childhood cancer. *AM. J. epidemiol.*, 109: 273.
25. Wertheimer, N. (1983) Adult cancer related to electrical wire near the home. *Int. J. Epidemiol.*, 11: 345.
26. Zusman, I., Yaffe, P., Pinus, H. and Ornoy, A. (1990) Effect of pulsing electromagnetic fields on the prenatal development in mice and rats, In vivo and in vitro studies. *Teratology* 42: 157-170.

\*\*\*\*\*

Fig1. Schematic drawing of the EMF system used in this work. A., ampermeter; c, coil; G, generator; Os, Oscilloscope

Fig2.comparision between CR, weights of embryos and placentas (day 5)

Fig 3. Stereophotomicrograph of control embryo in day 15 of gestation. Ey, eye; E ear; FL, forelimb; HL, hindlimb; T, tail. X 28.

Fig 4. Stereophotomicrograph of experimental embryo indicating lordosis defects. X 28

Fig 5. Stereophotomicrograph of experimental embryo showing abnormal curvature in the vertebral column. X 28

Fig 6. Stereophotomicrograph of cross section from the uterus, placenta and atrophied embryo X 78.5.

At, atrophied embryo; Pl, atrophied placenta; U, uterus.

Fig 7. Stereophotomicrograph of control (left) and experimental placenta with a large size (right). X 28

Fig 8. Stereophotomicrograph of control (left) and experimental placenta with a large size (right) note to the atrophied placental pieces in maternal surface, Atp. X 28

Fig 9. Photomicrograph of a section through maternal placenta with normal number of macrophages. BV, blood vessel; MP, macrophage, X 446

Fig 10. Photomicrograph of experimental placenta with large number of macrophages. Mp, macrophage. x 446

Fig 11. Comparison between CR. weights of embryos and placenta (day 6)

Fig 12. Stereophotomicrograph of section through the control embryonic head. c, cornea; L, lens; Ld, eye lid; Nc, nasal cavity. X 28

Fig 13. Stereophotomicrograph of section through the experimental embryonic head region. (treated in day 6). Note to the atrophy of growth of eye lids. Ld, eye lid. X 28

Fig 14. Stereophotomicrograph of section through the control embryonic head region. Ee, external ear; Ie, internal ear. X 28

Fig 15. Stereophotomicrograph of section through the experimental embryonic head region. (treated in day 6). Ee, external ear; Ie, internal ear. X 28

Fig 16. Comparison between the weights of control and experimental neonates. (day 7)

Fig 17. Stereophotomicrograph of section through the neural tube and vertebral column of control embryos. Nt, neural tube; R, ribs; V, Vertebra. X 57

Fig 18. Stereophotomicrograph of section through the neural tube and vertebral column of experimental embryos. (treated in day 6) showing abnormal bending appearance. x 57

Fig 19. Comparison between CR; weights of embryos and placentas (day 7)



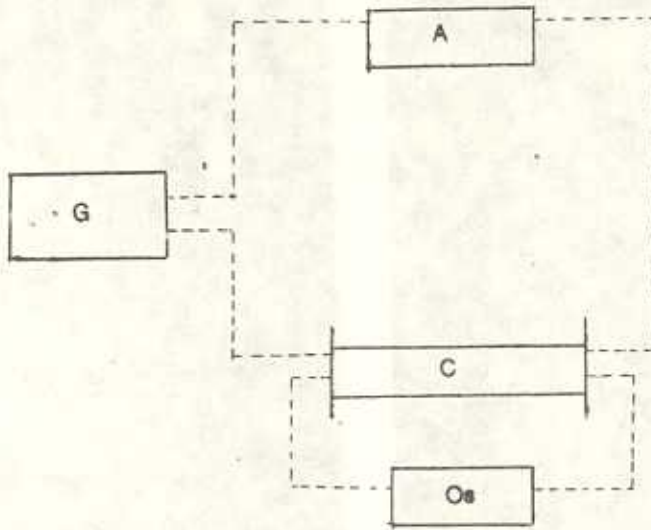
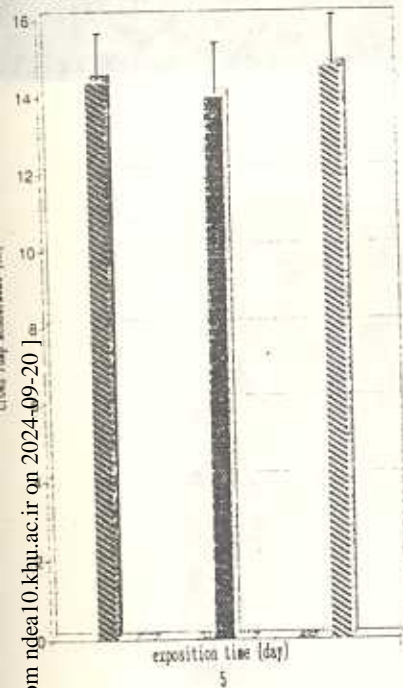


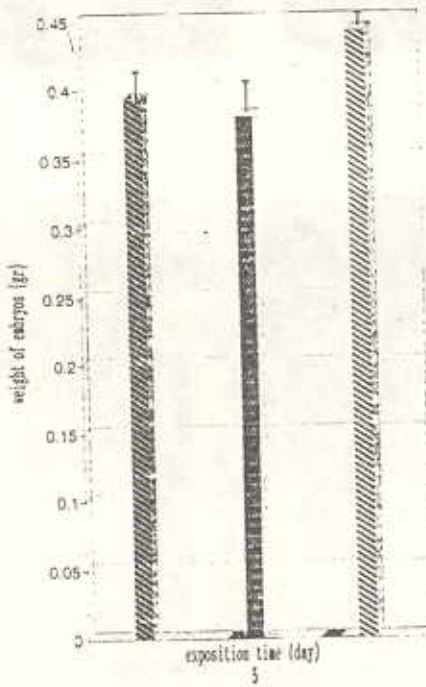
Fig 1

Fig 1

Comparison between crown-rump of control, sham exposed & experimental embryos in 15 day of gestation



Comparison between weight of control, sham exposed & experimental embryos in 15 day of gestation



Comparison between weight of control, sham exposed & experimental placentas in 15 day of gestation

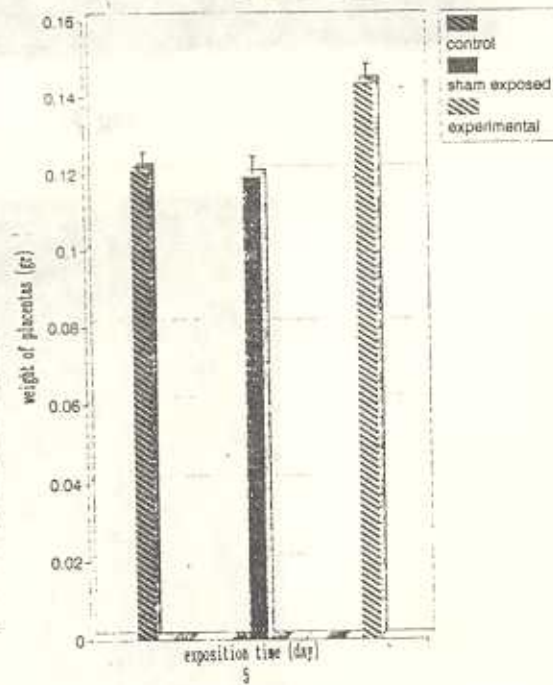


Fig 2

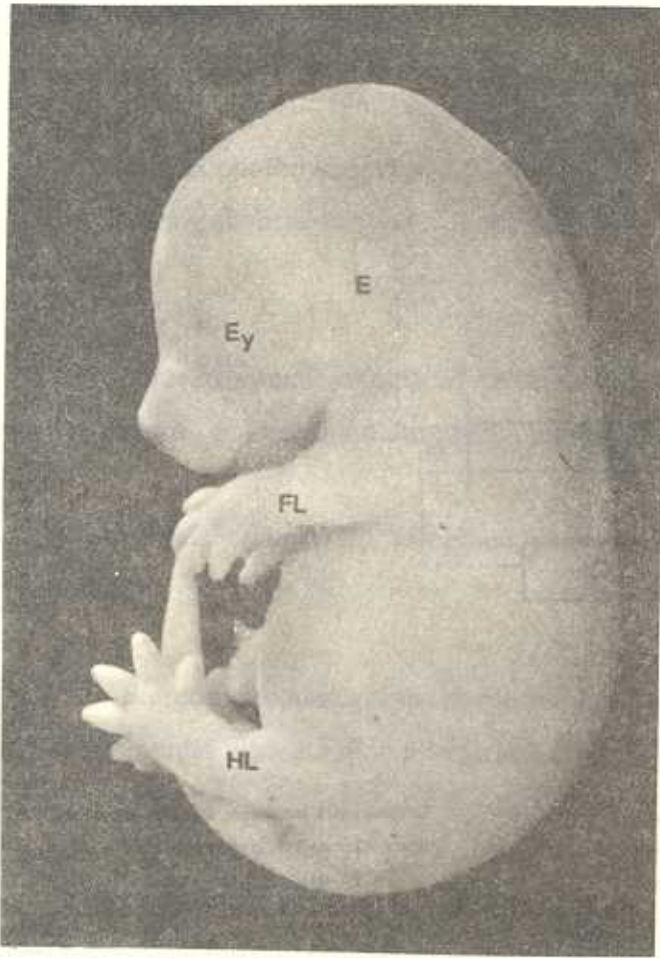


Fig 3



Fig 4



Fig 5



Fig 6



Fig 7

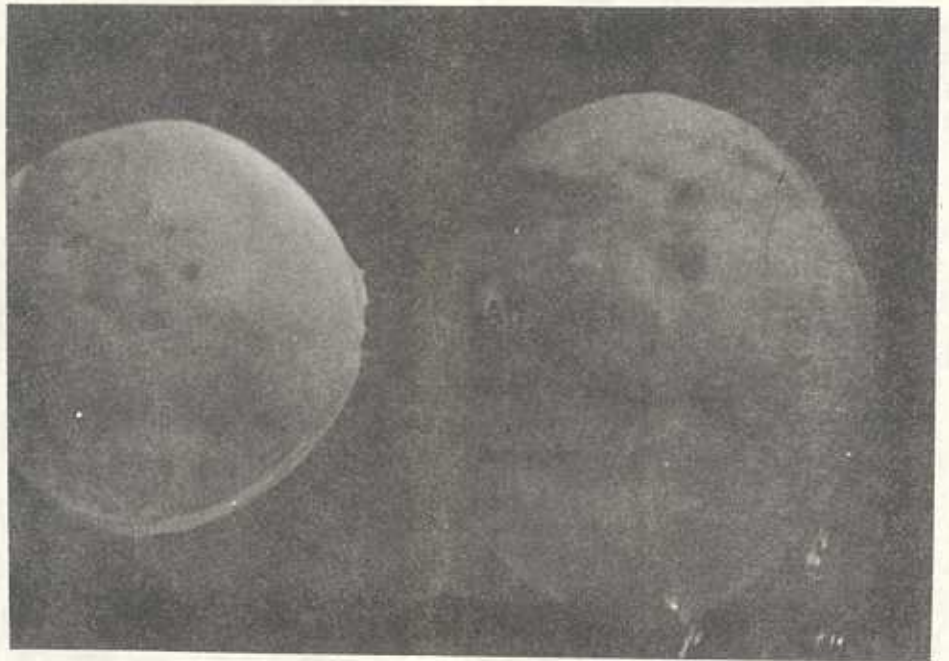


Fig 8



Fig 9



Fig 10

Comparison between crown-rump of control ,sham exposed & experimental embryos in 15 day of gestation

Comparison between weight of control, sham exposed & experimental embryos in 15 day of gestation

Comparison between weight of control, sham exposed & experimental placentas in 15 day of gestation

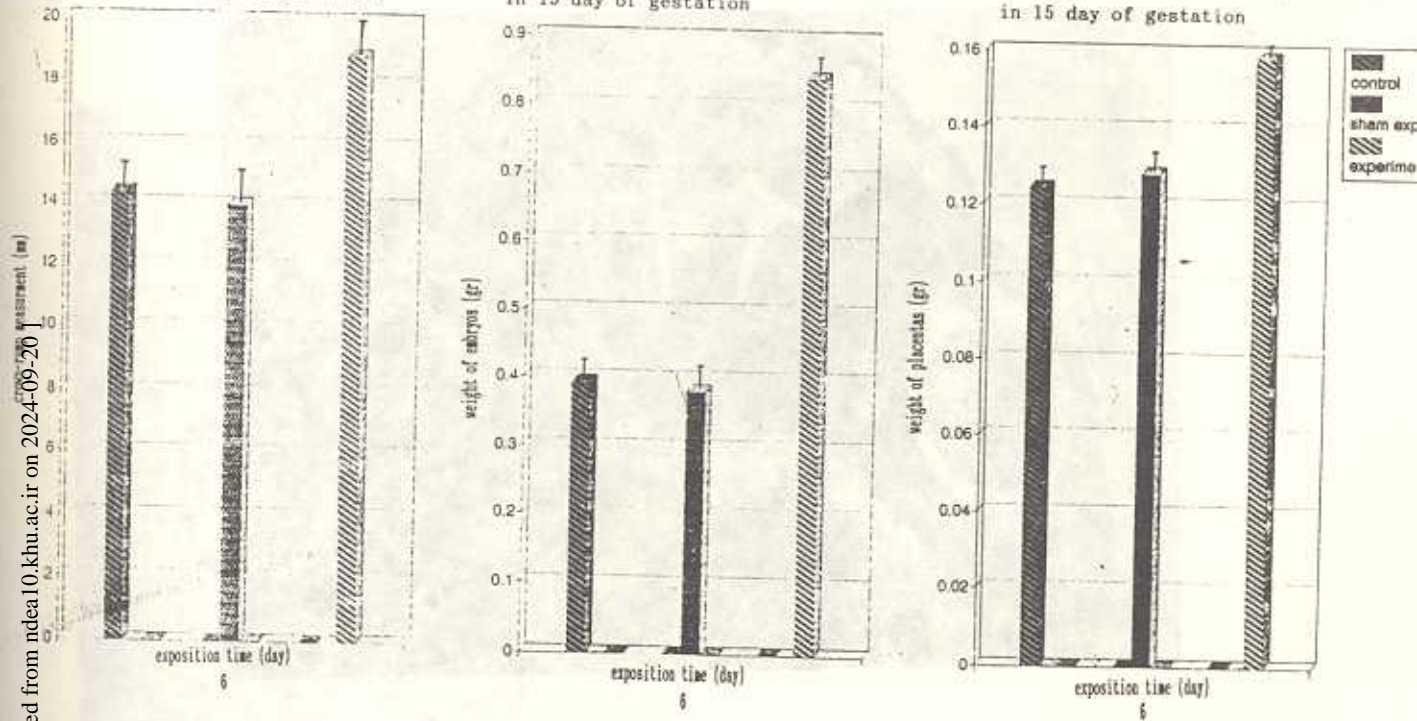


Fig. 11

Fig 11

[Downloaded from ndea10.knu.ac.ir on 2024-09-20]

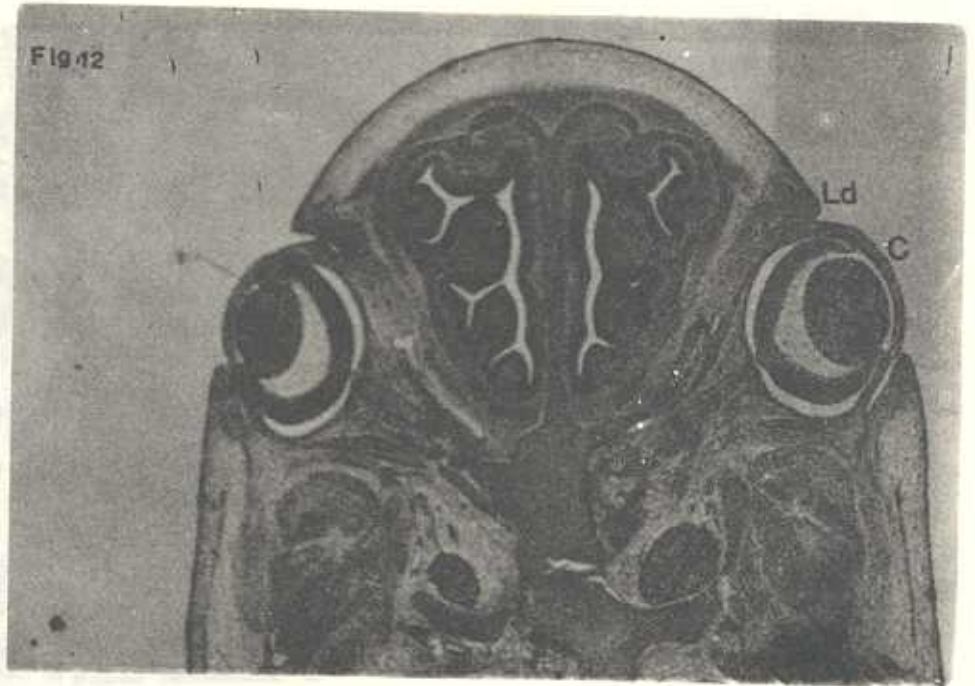


Fig 12

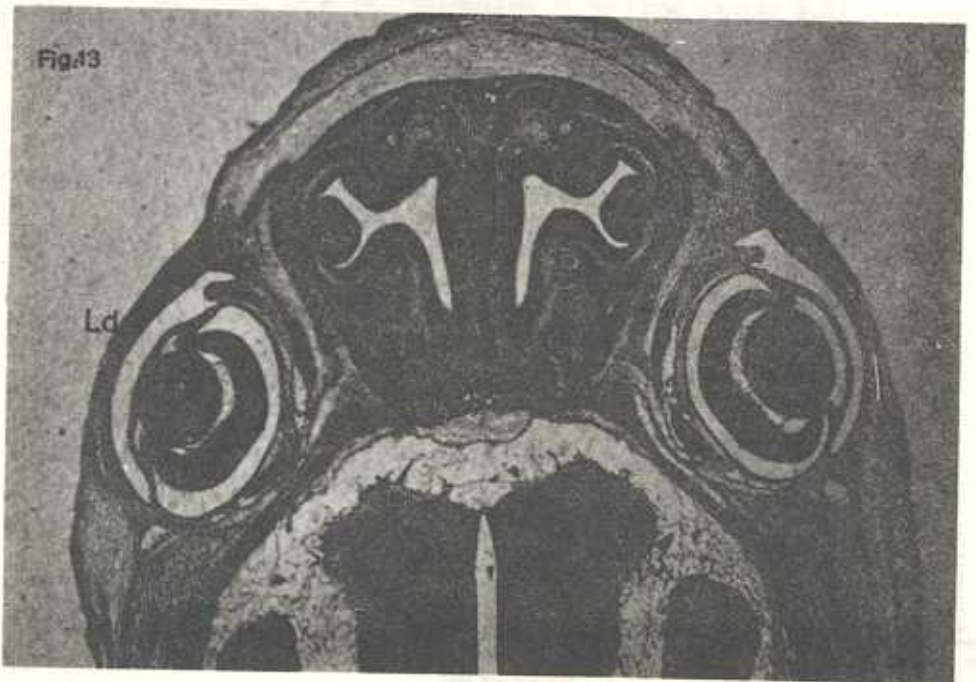


Fig 13

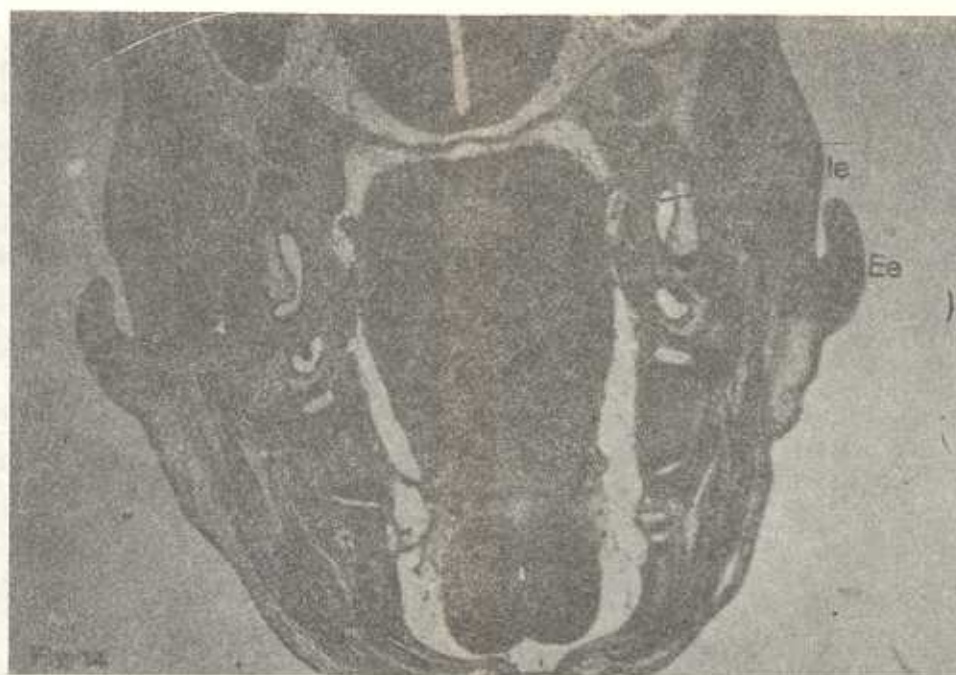


Fig 14



Fig 15

Comparison between weight of control, sham exposed & experimental neonates

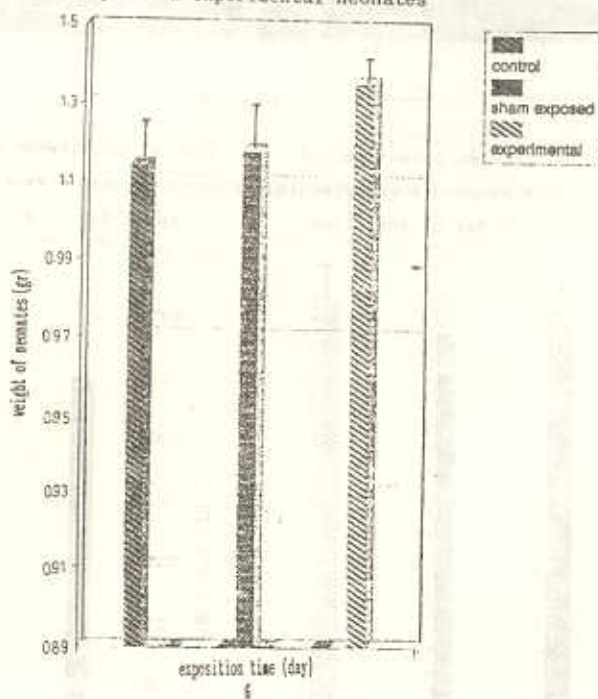


Fig 16

Fig. 16

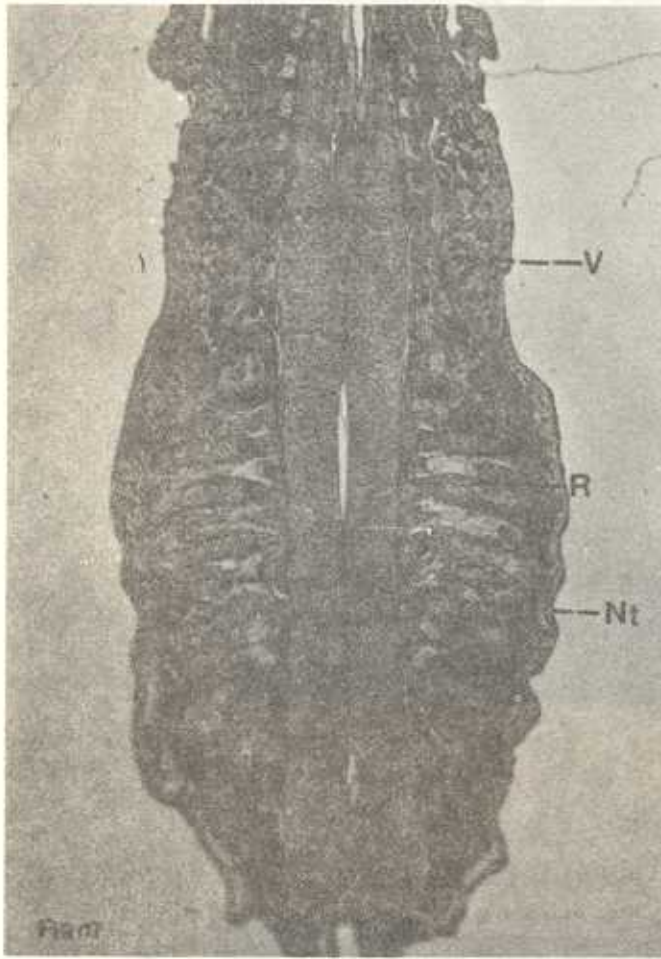


Fig 17

Fig 18

Comparison between crown-rump of control ,sham exposed & experimental embryos in 15 day of gestation

Comparison between weight of control, sham exposed & experimental embryos in 15 day of gestation

Comparison between weight of control, sham exposed & experimental placenta in 15 day of gestation

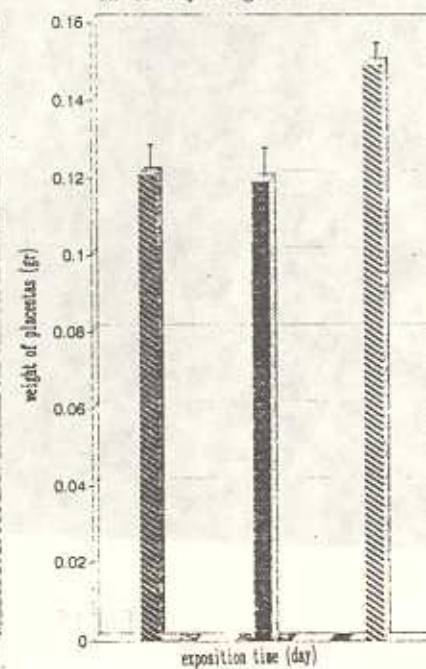
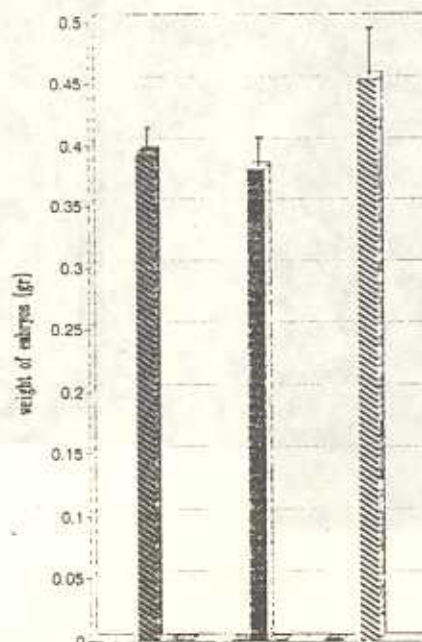
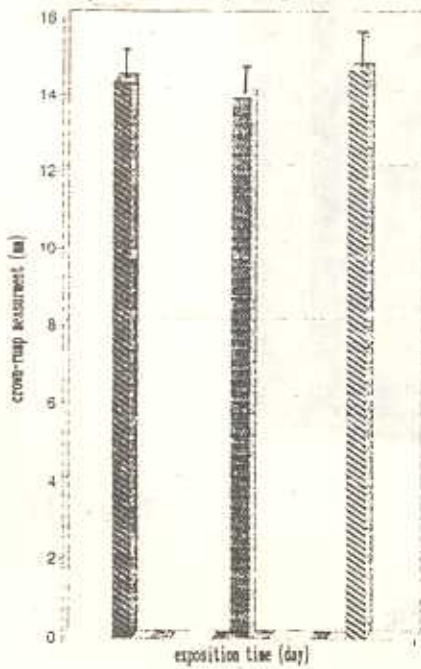


Fig 19